



**Next General Meeting**  
**Time 10.00**  
**Date 11th February**  
**Cominos House**

**President's report**

**Welcome back everybody**

Happy new year, and hope it will be a prosperous one for everyone.

We have a few changes to start the year Helen Harman will be our new Artescape co-ordinator for this year, while Mike takes a well earned break.

Our Plein Air outings are a great success, and don't forget the self portrait competition in March.

I am still waiting to have a meeting with the new Director of the Regional Gallery.

Sadly Rose Spencer is leaving us this year to continue her studies., however if we are still welcome at the Gallery.....Chris Chua and myself will be co-ordinating the 2012 exhibition.

*Jennie*

**CAS Management Committee 2011**  
**Patron.....Margaret Corchrane**

President:	Jennie Scott
Vice-President:	Greg Dwyer
Secretary:	Colin Johns
Treasurer:	Vicky Cash
Ass Treasurer	Diana Higgins
Publicity Officer:	Bronwyn DeMaio
Committee	Mary Schiess
Exhibition co-ordinator	Chris Chua
	.....

**Contact us**

N.B. Although CAS is based at Cominos House, please note that an office is not staffed.

Postal Address:

Cairns Art Society Inc.  
PO Box 1400 Cairns QLD 4870

**President: Jennie Scott**  
Jenniescott2@westnet.com.au

**ArtEscape: Helen Harman**

*What we vividly imagine, ardently desire, enthusiastically act upon,  
Must inevitably come to pass.*

*Colin P. Sisson*

## Mr. Pedantic's Pertinent

Painty Points.



Point No. 31

### The WARM the COOL and the UGLY

Hello folks. Welcome to 2012 and a whole new series of Mr Pointy and his plenty opinions.

This is for folks who often hear the terms Warm Colours and Cool Colours, but struggle to understand what the hell that **a c t u a l l y m e a n s** . Its not by any means an exact science, and after all everything is relative, so it's a bit like the "i before e" rule. The exceptions to the rule are so numerous, it's barely a rule at all. More a wistful thinking version of a correct language only spoken by Barry Bigglesworth of Stoking on Kent and only on Wednesdays IF the paper boy is wearing bicycle clips.

So, I'm going to cut the cheese and keep it even simpler.

**Yellow and Red are warm.**

**Blue and White are cool.**      *There. I said it.*

Now having said that I can hear the well studied art student protesting and saying NOOO that's only IF the red is on the orange based side as opposed to the magenta side and my mother will punch you if you say it isn't so.

And not wishing to be thwatted by Sergeant Barry Bigglesworth Snr (Mrs) Ill agree while still within thwatting distance.

The thing is, that Blue is almost always going to be cool compared to reds and yellows. And vice versa. That's all.

Also , in most cases, adding white will cool a colour down.

Because, you see, bright does not mean light. Bright is More. Light is Less.      **Confused?** There there pet. J  
M a k e s o m e t e a .

To think of this in more practical terms, imagine a picture of a tree on a sunny day. The colours out in the sun are yellowy warm and the colours in the shade are bluey cool.

It's not really much more complex than that. The rest is quite boring and you can still paint your whole life knowing only this and nothing more.

Unless you want to paint a Zebra on a turquoise birthday cake. Then you might need a team of Sherpas to guide you up the Mountain of Ultimate Colour Knowledge.

You'll also need a torch, a box of matches, a map of Ireland and a serious cut lunch.

"What do you mean is Green cool or warm Biggles ??

OUTSIDE !! "

Greg Dwyer Feb/2012 J

## Guest Speaker

*Jennie Scott*

**Sat Meeting 11th February**

**Cominos House**

### Life Drawing demonstration

15 yrs life drawing... 3yrs teaching in UK



Live male model *fully clothed*

Bring sketch pad charcoal/pencil

## Appointments

Cairns Art Society are looking for a budding **Photographer and webmaster**, Ingrid Douglas our present webmaster will not be with us, as she is going to extend her studies in photography, she will be missed as she did a wonderful job.

We are also looking for someone to arrange our **guest speakers** every month..... Jennie

## PLEIN AIR PAINTER'S GROUP

### The City Park in Gordonvale 18th February

from 1 PM onwards

- Sessions will be held on the **Third Saturday** of every month

Just turn up and paint.

Location changes every month and will be announced in the monthly newsletter – suggestions welcome

- Email Rhonda if you want to be included on the list:

The *Fourth Plein Air session* took place at Palm Cove on Saturday 21st January

Plein Air – next meeting February 18<sup>th</sup>, 1pm onwards, Gordonvale city park.

We met at Palm Cove down near the Jetty on Saturday 21 January with three of us in the morning and seven of us in the afternoon. It was a bit wet and windy at times but we had a good day. A special welcome to Anne and Kerrie who separately came down from Atherton and Mareeba. Next month will be at Gordonvale in the main park and we will paint some of the old buildings. I have not checked it out yet, so cant tell you more yet, but I will send an email to those on the list before next months meeting – third Saturday in February, which is 18<sup>th</sup>. If its wet, we will go under the shops or seek shelter nearby. Keep my mobile handy 0448 515999 and if you want to be added or removed from the list: [rhonda.sciacca@bigpond.com](mailto:rhonda.sciacca@bigpond.com). 1pm onwards, but there are usually earlybirds.



*Feedback and suggestions for new venues are always welcome and encouraged. Email me at [rhonda.sciacca@bigpond.com](mailto:rhonda.sciacca@bigpond.com). Email me to be added to the list. My phone is 0448 515999 in*

# CAIRNS ARTescape

16 – 20 July 2012



*wimming Upstream* by Mo Godbeer

## Winter School in the Tropics

Enjoy visual arts at the  
Tanks Arts Centre  
Edgehill

Get ready for a great Winter School in the Tropics!  
ARTescape is under new management for 2012 as  
Mike Ferris is taking a break to organise a painting tour in  
France. There's a wonderful selection of tutors to choose from,  
with the introduction of 7 new tutors.

**Greg Allen** Contemporary Watercolours

Watercolour

**Lyn Butchart** Textured Watercolours

Watercolour [www.lynbutchart.com.au](http://www.lynbutchart.com.au)

**Lyn Diefenbach** Wow Factor - Portraits & Flowers

Oil [www.ldief.com](http://www.ldief.com)

**Steven Dix** Abstract – Learn to Be Free

Acrylic [www.stevendix.com](http://www.stevendix.com)

**Garry Duncan** Artomic

Acrylic [www.garryduncanartist.com.au](http://www.garryduncanartist.com.au)

**Greg Dwyer** Sunshine

Oil [www.gregdwyerart.wordpress.com](http://www.gregdwyerart.wordpress.com)

**Christine Eyres** Colour, Tone, Texture & Fun

Oil or Acrylic [www.christine-eyres.com.au](http://www.christine-eyres.com.au)

**Michael Ferris** Watercolour Made Easy

Watercolour [www.michaelferris.com.au](http://www.michaelferris.com.au)

**Sonja Georgeson** Drawing Adventure

Graphite etc (Google)  
**Mo Godbeer** Encaustic Mixed Media

Encaustic <http://mo.godbeer.com>

**Fu Hong** Nudes and Portraits

Oil [www.wix.com/fuhong](http://www.wix.com/fuhong)

**Sarah Larsen** Mixed Media Magic

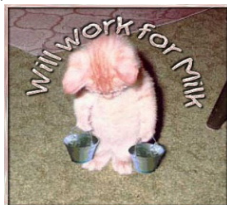
Mixed Media [www.sarahlarsen.com.au](http://www.sarahlarsen.com.au)

**Richard Rogers** Make, Break & Bend the Rules

Acrylic [www.richardrogers.com.au](http://www.richardrogers.com.au)

Details will be available on the website shortly, but if you require  
any further information, please contact the ARTescape Co-  
ordinator, Helen Harman on 4045 3131, 0407 160 831 or email  
[cairnsartsociety@bigpond.com](mailto:cairnsartsociety@bigpond.com)

[www.cairnsartsociety.co](http://www.cairnsartsociety.co)



## Pres's Monthly Artist

Turner .....1775...1851 UK



Turner's early work was very  
stereotype of the late 18th century,  
however as Turner grew older he  
moved, more and more, in and out  
of an enchanted world of his own—  
of colour and light—his vision of  
timeliness.

Turner's wonderful use of light  
started to give his work an almost  
dreamlike feel about it, he was thor-  
oughly happy with painting bad  
weather; avalanches and deluges,  
wirl-winds and vortex like convul-  
sions, which expressed his spirit.

*When I was fifteen I did a week of work  
experience at the Tate Gallery in Lon-  
don. I was allocated the Turner Gallery.*

*It was amazing, some of his paintings  
were enormous, even though I was there  
for only a short time, I became ex-  
tremely inspired by his work.*

*I remember this very dapper little man  
came into the gallery and pointing at  
the paintings with his silver studded  
walking stick and saying...An Artist be-  
fore his time....*

*The Security man said that was ....*

**Salvador Dali**

## Key Dates

Plein Air.....18th Feb

Artist of the North 21st April ..18th May

Portrait competition.... 10th March

## Glass Fusing Classes

**Lessons, beginners to advanced,  
starting February 2011..Tutor;**

**Judith Bohm-Parr**

Cairns Potters club members \$120.00) -

**Please register your interest  
with the Cairns Potters Club  
via [lone@tpg.com.au](mailto:lone@tpg.com.au)**

**40537508 Lone White**



## Suggestion Box

There will be a suggestion box at every meeting for anyone who wishes to participate, just enter your ideas, or your grievances in the box and it will be read out at the meeting.

You do not have to sign your name

Learn how - at the Cairns Potters Club.

28a Grove St -Cairns

Fusing & slumping:

**Make A BOWL OR PLATE.**

- 10 am to 4pm Saturday 17<sup>TH</sup> & 18<sup>TH</sup> March
- \$135.00 includes materials, firing and morning tea.

**GLASS JEWELLERY:**

Make EARRINGS, NECKLACES, PEDANTS AND BRACELETS.

- 10 am to 4pm Saturday 3<sup>rd</sup> March
- \$65.00 includes materials, firing and morning tea.

(Cairns Potters club members \$60) - (BYO lunch

Allan Tan, CEO, The Reef Hotel Casino is delighted to invite you to view

## Summer - Views & Blooms

Artworks by Tania Heben and Louise Derry  
Chat with Tania and Louise over drinks and canapés

Join Justin Bishop, Exhibitions Manager Cairns Regional Gallery, to officially launch the exhibition  
The Reef Hotel Casino Foyer, 35-41 Wharf St Cairns, 18 January 2012 at 5.30pm



RSVP: Tania M: 0417 799 406 E: [taniaheben@bigpond.com](mailto:taniaheben@bigpond.com) or Louise M: 0403 058 623 E: [louderry@gmail.com](mailto:louderry@gmail.com)  
Exhibition continues until April 2012



# Classes

## Art Classes with Greg Dwyer

Tuesday, Wednesday, Thursday  
Cominos House

27 Greenslopes St, Edge Hill

Fees: \$25 for a 3 hr class

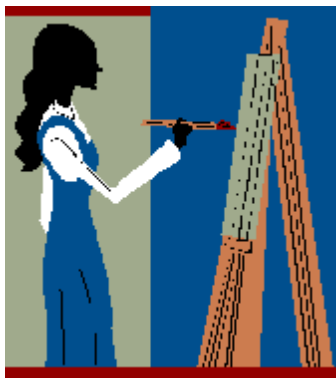
Classes are kept interesting with each student receiving individual attention.

For details and bookings:

ph: 40322313

mob: 0447 773 995

E: [mambolip@hotmail.com](mailto:mambolip@hotmail.com)



## Fun Art Group

Fun Art Group is an informal group of amateur artists who meet every Wednesday at the YMCA, Smithfield (near the Library) from 11 am to 3 pm.

BYO materials and lunch, with tea and coffee provided. To assist with the hire of the hall, cost is \$5 per session. Everyone is welcome to come along and have some fun.

Contact the YMCA on 4057 7507.

## Life Drawing at James Cook University Cairns

- Open Workshop at the School of Creative Arts, Art Studio, Building A4 (first building), Room 026/027 (ground floor).
- Tuesday nights, 6.30-9pm, and 2nd Sunday each month 9am-4pm (single pose all day).
- All are welcome – no need to book, just turn up. Knock if the door is shut for privacy.
- Workshops include model, music, easels and boards, drawing discussion and reviews. Please bring your own drawing or painting materials, paper and clips. The fee is \$10 on Tuesdays, \$15 if fewer than 5 people, and \$35 for Sundays (tea and coffee too), or pro rata hourly.

Please email me know if you wish to be added or removed from this list. Margaret Genever.

[life.drawingjcu@hotmail.com](mailto:life.drawingjcu@hotmail.com)

### Are you interested in Cairns Public Art?

Comments on the new Public Art Plan close on 17 Feb 2012.

You can view or download the Plan from the Community Engagement page of CRC website.

You may either make a written submission on the Plan OR reply to the Questions on the Your- ay forum of Council.

The Plan covers a five year program as is important for those that work in public Art or have an interest in what Cairns Public Art will achieve



**ART & OFFICE**  
Where Service is an Art  
Stationery \* Art \* Drafting  
Specialty Papers

**For your arts and business needs, come see the friendly staff at**

**Art & Office**  
**110 Scott Street Cairns**  
**PH: 4051 0552**

## Self Portrait Competiton –March meeting 2011- \$5 per entry

- Bring your entries to the CAS meeting in March or arrange to get them there.
- \$5 per entry but bring your drawings and preliminary sketches to show if you want to
- It can be realistic or a caricature but must be of yourself and done by you
- Can be on canvas, paper, board, drawing, sculpture – anything, any size.
- Head and shoulders only or full body – clothed or unclothed if you are game enough
- Bring your entries to March meeting and they will simply be lined up against the walls and we get a chance to peruse all entries before the judging.
- Entries will be judged by those still there after the March meeting. The owner (or representative) will hold up the entry, give a one minute spiel about it if they want to and we will vote by a number system of 1-10. If it s a draw, the prize will be shared.
- Prize money will come from whatever the proceeds are of the entry fees. There will be a winner and a runner-up
- Entry fee will be paid in cash on the day at the March meeting – no change given please bring correct money
- You will receive a number for your painting and a voting slip when you pay

## The CAS Archives

I would like to get the CAS archives up to date for future reference, we are missing several back copies of exhibition catalogue copies 1999 – 2010. if anyone has got anything on CAS can you Please bring them to the meetings.

Many thanks

jennie

Now available from

*MANNELLI* of Cairns

**CUSTOM MADE STRETCH CANVASES** with high quality finish and presentation

**CANVAS BY THE METRE** – 190 cm wide, double primed, suitable for oils and acrylics

**EASELS** – various styles designed by *MANNELLI*.

**Inspection** of products available by appointment.

**Deliveries** can be arranged.

**For more information** please phone: 0438 007 929 or

CAS is proudly supported by



### Cairns Craft Centre

Showground Shopping Centre  
157 Mulgrave Road, Cairns, ph 4031 3024

**Art & Office**, 110 Scott Street, Cairns  
ph 4051 0552

**Australian Art Framers**, 22 Martyn Street  
Cairns, ph 4031 6947



Hello,

Thank you for your interest in the Cairns Art Society.

Membership of Cairns Art Society entitles you to receive the monthly newsletter, a 10% discount on art materials at Cairns Craft Centre, Cairns Drawing Supplies, Australian Art Framers and The Picture Framer on presentation of your card, plus discounted fees for CAS exhibitions and workshops.

General meetings are held:

At 10 am, the 2<sup>nd</sup> Saturday of each month (except January) at Cominos House, 27 Greenslopes Street, Edge Hill.

Meetings usually include a Guest Speaker, presenting information or a demonstration on the many facets of art. Members and guests are always welcome to attend, meet fellow artists and enjoy a chat over morning tea. Please note that although Cominos House is our base, this is not a manned office.

Throughout the year we hold three major events; the Annual Open Art Exhibition, the Artists of the North Exhibition, inviting all incorporated art societies and associations within the region to participate and CAIRNS ARTescape, a 5-day workshop to learn or improve art skills with professional tutors.

Membership Forms can be posted to Cairns Art Society Inc., PO Box 1400, Cairns 4870, emailed or presented at our Gallery at the DFO Shopping Centre at Westcourt Plaza.

Due to recently changing our financial year

to end 31 March, your membership will be current until 31 March 2012.

If you have any further queries:

Please contact Helen on 4045 3131 or email: [helen@cairnsartsociety.com](mailto:helen@cairnsartsociety.com)

## Membership Form

Cairns Art Society Inc., PO Box 1400 Q 4870

email: [helen@cairnsartsociety.com](mailto:helen@cairnsartsociety.com)

Enclosed is the amount of \$ \_\_\_\_\_,

payable to Cairns Art Society Inc. by:

Card  Cash  Cheque  Money Order

Cardholder Name: \_\_\_\_\_

Credit Card No.: \_\_\_\_\_

Expiry date: \_\_\_\_/\_\_\_\_

Direct Deposit  BSB 633108 A/c 112765391

(Please specify your name in transaction details)

### Membership Fees (tick whichever applies)

Individual \$40

Family \$50

Concession (Centrelink card) \$30

Student (ID No. \_\_\_\_\_) \$25

Donation / sponsorship \$

### Membership Details

I am renewing / rejoining my membership

I am a new member of the Society

Mr/Mrs/Ms: \_\_\_\_\_

Address: \_\_\_\_\_

\_\_\_\_\_  
Postcode: \_\_\_\_\_

Phone: (H) \_\_\_\_\_ (W) \_\_\_\_\_

Mobile: \_\_\_\_\_

Email: \_\_\_\_\_

Skills to assist CAS: \_\_\_\_\_

Could you volunteer for CAS events: \_\_\_\_\_

Signature: \_\_\_\_\_

Date: \_\_\_\_/\_\_\_\_/\_\_\_\_

Note: Membership is valid until 31<sup>st</sup> March 2012

Receipt Date: \_\_\_\_\_ No. \_\_\_\_\_

**If undeliverable return to:**

**Cairns Art Society Inc.**

**PO Box 1400**

**Cairns QLD 4870**

**Print Post Approved**

**PP434044/0012**

SURFACE MAIL

POSTAGE PAID  
AUSTRALIA

[www.cairnsartsociety.com](http://www.cairnsartsociety.com)

If you have any further queries:

Please contact Jennie on 40674180 or email: [.jenniescott2@westnet.com.au](mailto:.jenniescott2@westnet.com.au)